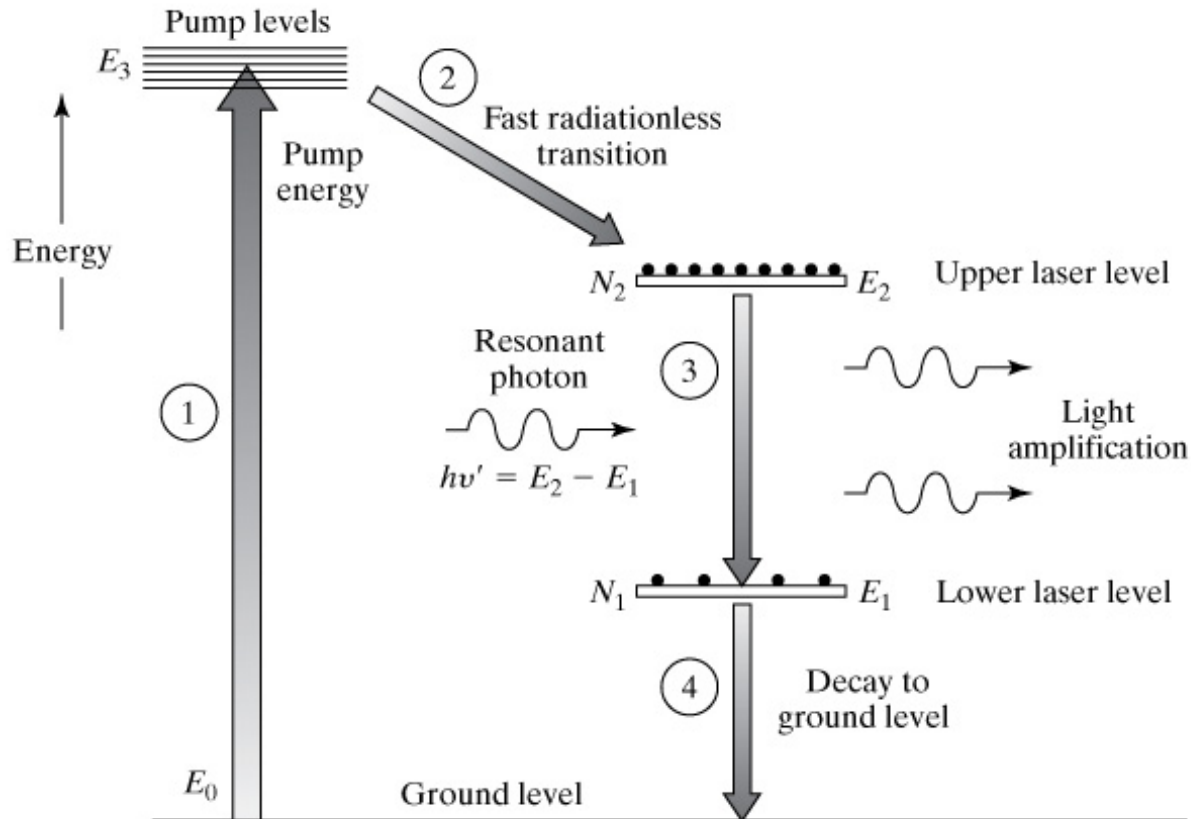
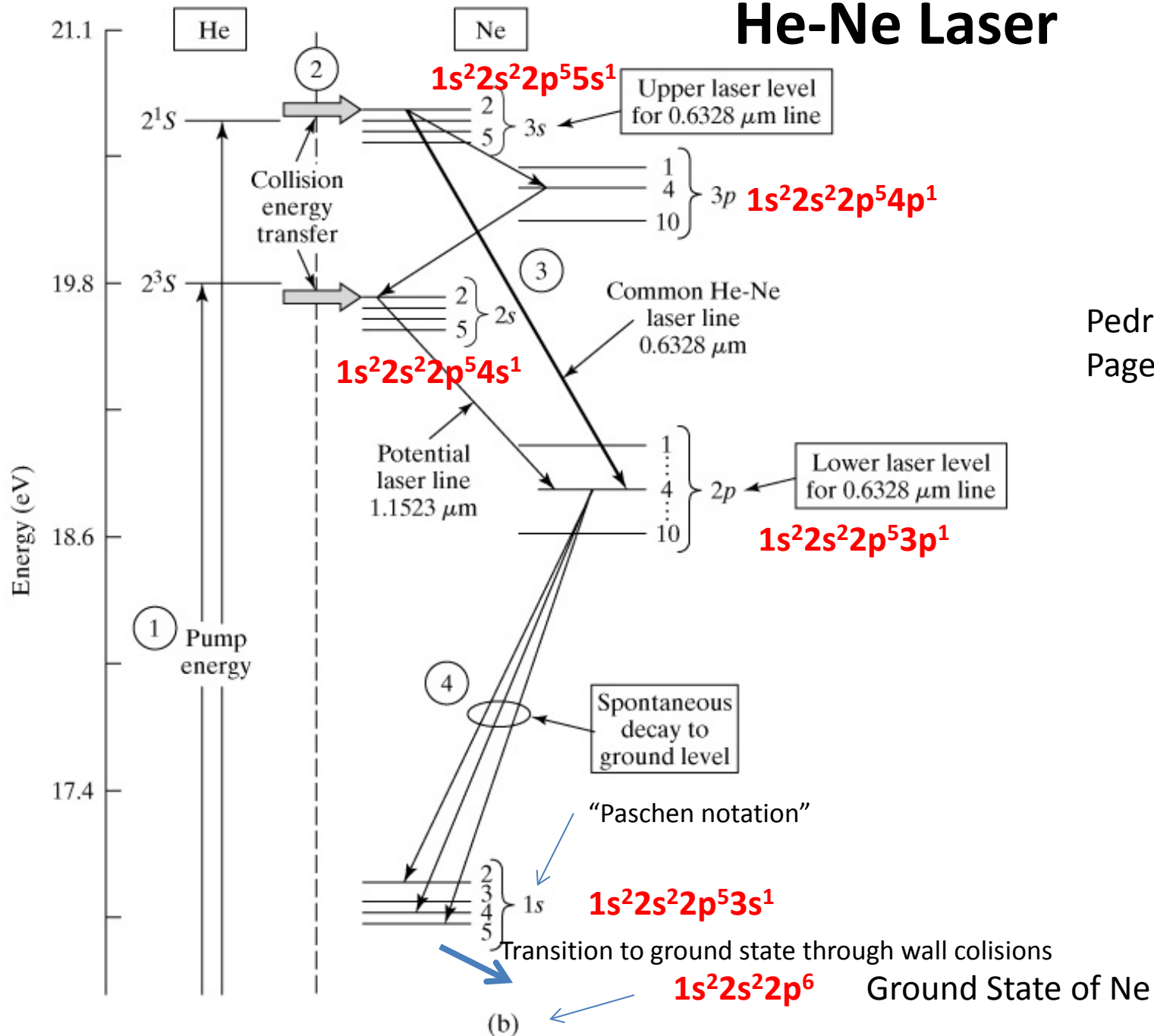


General Features of a Laser



He-Ne Laser



Pedrotti³
Page 150

POPULATION INVERSION AND CONTINUOUS OPTICAL MASER OSCILLATION
IN A GAS DISCHARGE CONTAINING A He-Ne MIXTURE

A. Javan, W. R. Bennett, Jr., and D. R. Herriott
Bell Telephone Laboratories, Murray Hill, New Jersey

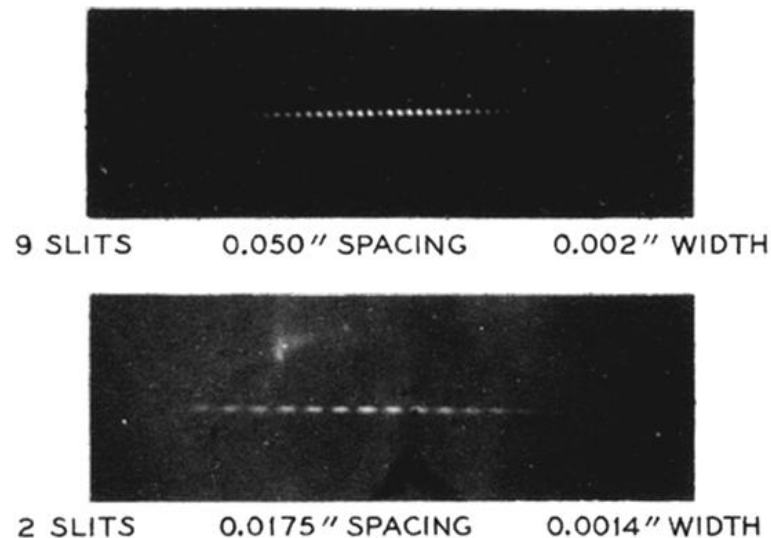
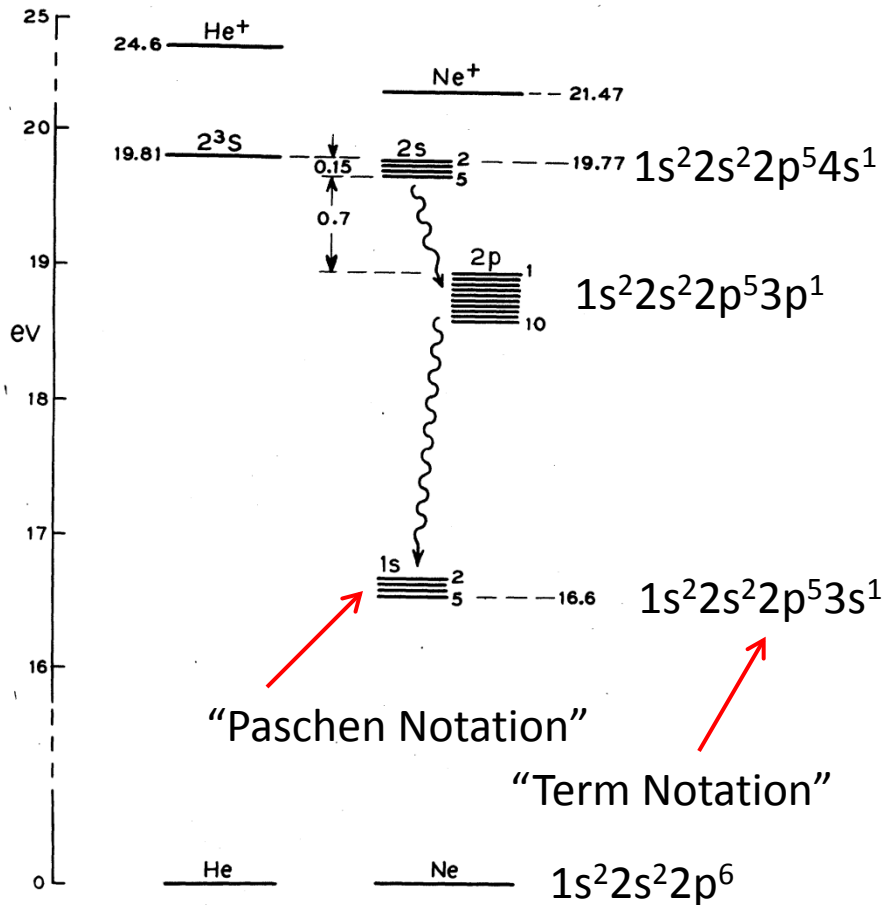


FIG. 3. Far-field diffraction patterns obtained by inserting multiple slits in the maser beam.

FIG. 1. Energy level diagram of He and Ne atoms.